



*Le Groupe Desfor*



*Aboriginal partnerships*

SECRÉTARIAT AUX ALLIANCES ÉCONOMIQUES NATION CRIE ABITIBI-TÉMISCAMINGUE

SECRETARIAT TO THE CREE NATION ABITIBI-TÉMISCAMINGUE ECONOMIC ALLIANCE

IN COLLABORATION WITH

Ville d'Amos

AMOS

PRESENTS A CONFERENCE ON

# Looking Ahead Together

June 1-2, 2016  
Hôtel des Eskers  
Amos (Quebec)

Exchanges  
Issues  
Challenges  
Opportunities

Registration now open!

The poster features a vibrant orange and red background. On the left, there is a silhouette of a tree. In the center, a circular inset shows a yellow construction vehicle. To the right, there are silhouettes of two tipis. The overall design is modern and professional.

**« You are my best business partners! »**

**Billy Diamond**

## *Summary*

- Who we are**
- Companies Activities**
- Partnerships with First Nations**
- Short video**

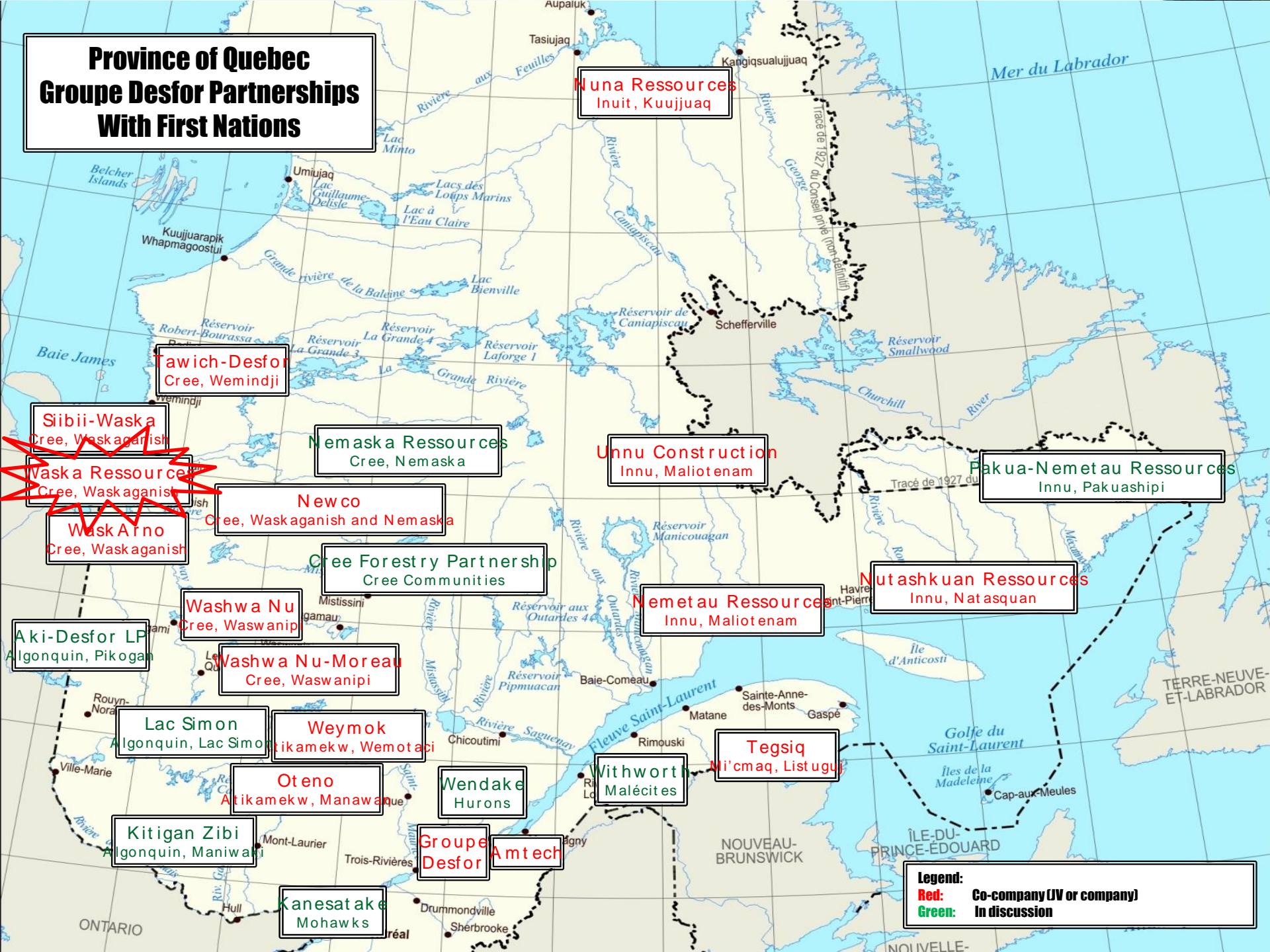


Grocery Store – Waskaganish May 2016



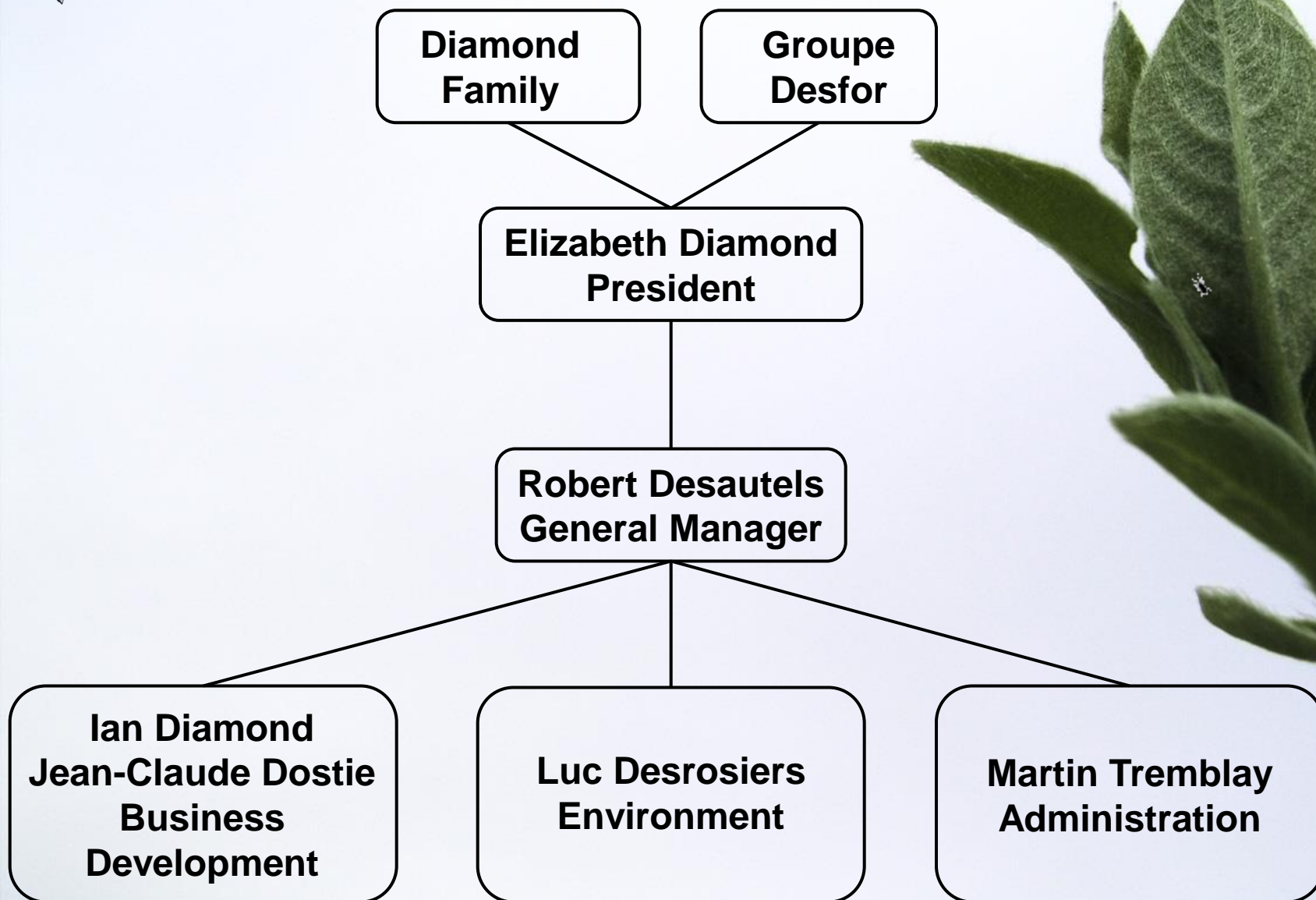


# Province of Quebec Groupe Desfor Partnerships With First Nations





# ***Waska Ressources: Who We Are***



# ***Waska Ressources: Who We Are***

- **Joint force with Siibii Development Corporation**
- **Use sub-contractor from other communities (Apitsiu, VCC, etc...)**
- **Use Human Resources from other communities (lineman)**





# ***Company's Activities***

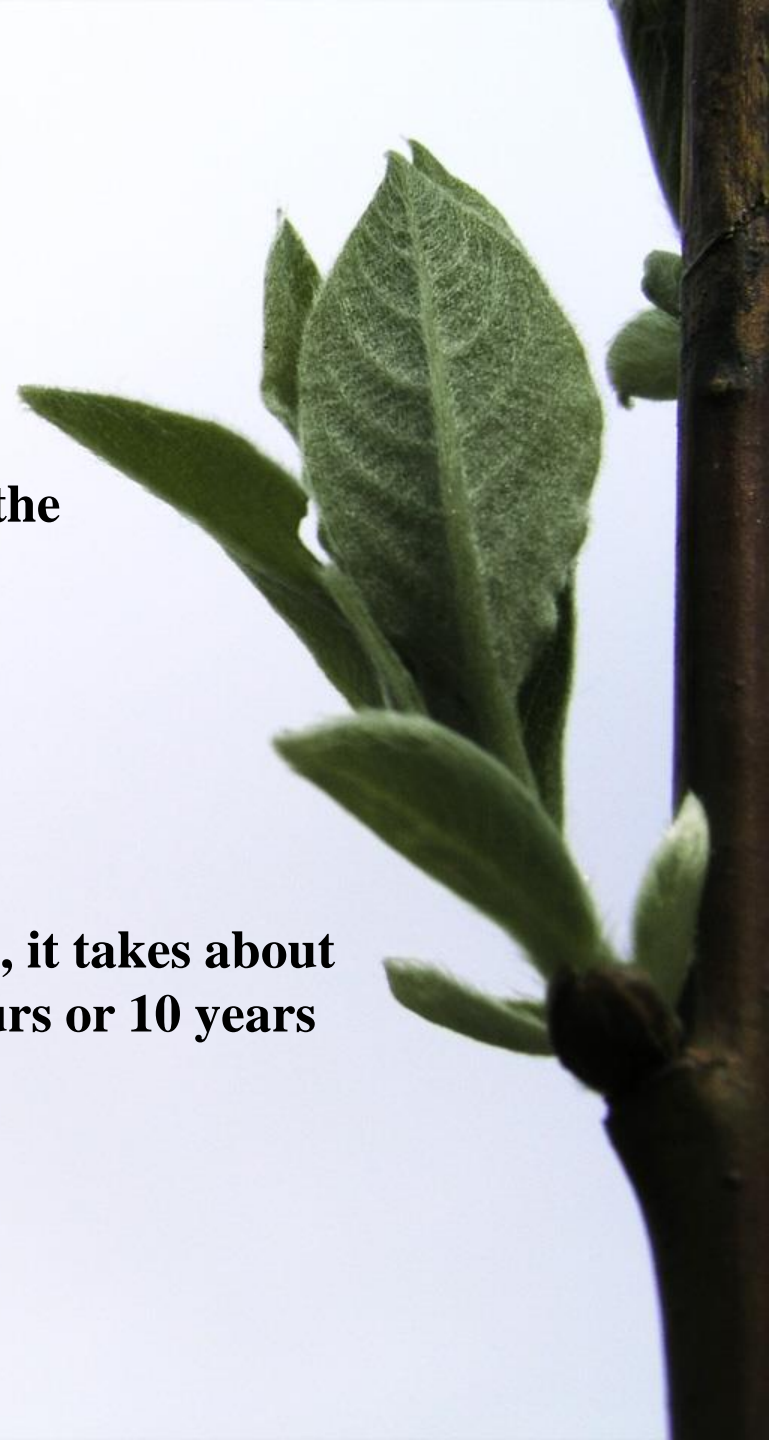
- **Forestry**
- **Civil Engineering**
- **Project Management**
- **Construction (RBQ licence)**
- **Environment**
- **Surveying**
- **Geomatics**
- **Communications**
- **Customized Training**





**Let's say you want to travel the  
world....**

**If you walk, it takes about  
20 000 hours or 10 years**



# ***Le Groupe DESFOR***

## **Forestry**

- Development & integrated management of resources
- Ecoforestry and multiresources inventories
- Silviculture works
- Photo-interpretation (ecoforestry, geomorphology)
- Clearing plans & specifications
- Dynamic study of vegetation under powerlines
- Forestry and ecology mapping
- Forest roads
- Management & surveillance of forest & silviculture works
- Feasibility economic study
- Supplying study

## **Environment**

- Development & integrated management of resources
- Ecoforestry and multiresources inventories
- Impact study
- Certificates & environmental authorizations
- Mitigation measures studies
- Affected sites plans & specifications
- Verification of compliance
- Aquatic biology





# ***Le Groupe DESFOR***

## **Surveying & Technical Surveys**

- Layouts technical surveys
- Plans & profiles production
- Layouts optimization (filling & cutting, Class 1 & 2)
- Price quantities
- Borrow pits localization
- Technical surveys for campsites and bridges
- Watersheds studies
- Geomorphology

## **Certification (sustainable development)**

- Layouts technical surveys
- Environmental certification (ISO 14 000, CSA, FSC)
- Forestry practices certification
- ISO 9000 Certification

**Quebec – Montréal – Northern Quebec**



**Nunavut Road Expertise – Agnico-Eagle 2015**

# ***Les entreprises forestières AMTECH***

## **Forest Works**

- **Harvesting (turnkey project)**  
(planning, harvesting, transport, supervision)
- **Road construction**
- **Merchantable wood salvage (reservoir, epidemic, fire)**
- **Vegetation control (mechanical, chemical)**
- **Initial clearing (line, pipeline, rail road)**
- **Ice bridge**
- **Drainage**
- **Scarification**
- **Rehabilitation of burned sites**
- **Reforestation**
- **Thinning (commercial, pre-commercial)**
- **Fertilization**

## **Other works**

- **Civil works**
- **Construction**
- **Right-of-way management**
- **Snow clearing**

**Quebec – Montreal – Northern-Quebec**



**Wood transportation Domtar – Quévillon September 2001**



# ***Community of Waskaganish***

## **Construction of weirs (SEBJ)**

- 60% of Cree operators (\$200M contract )
- Sub-contracting to other communities (Eastmain, Wemindji)
- Liaison agent
- Concrete plan, camp, bus, trucks, grader, excavators

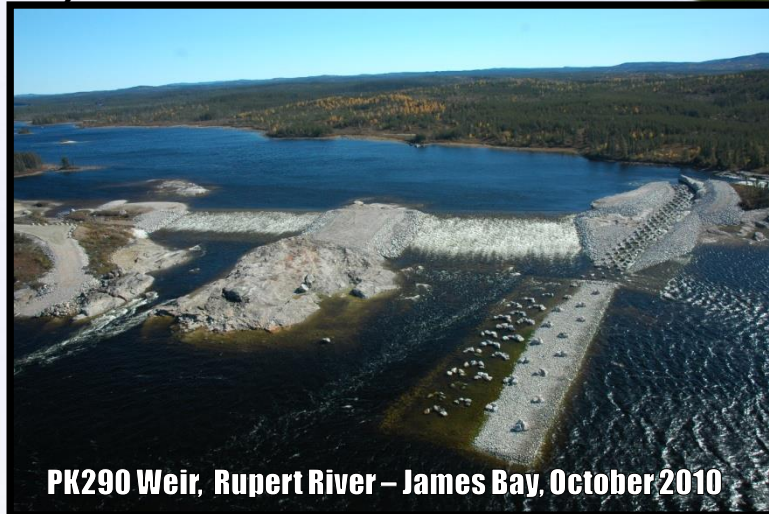
## **Environmental monitoring (HQ)**

- Ice inspection training (10 Crees)
- Cree biologist working on our projects
- Hiring of local drivers and boats in each community
- Drifting larvae: 30 workers
- Cisco monitoring: 10 Cree boat drivers and 10 Cree assistants
- 20 Cree trainees in environment

## **Rupert river access road construction (SEBJ)**

- 100% aboriginal workers (except. superintendent)
- Local sub-contractor (Siibii)
- Client satisfaction (price, quality)

## **Office in the community**



**PK290 Weir, Rupert River – James Bay, October 2010**





# ***Community of Waskaganish***

## **Construction of a spur in the Rupert River (SEBJ)**

- Sensitive area for the population (directly in the village)
- Local joint venture (Siibii)
- Client satisfaction

## **Construction of an electric Nemiscau-Waskaganish (HQ)**

- Over 30 000 hours by Aboriginals
- Agreement between 4 partners, including CCDC

## **Conversion of electric network and construction Waskaganish power station (HQ)**

- Linemen training (7 Crees, Back to the North video)
- Agreement between 4 partners, including CCDC

## **Construction of a grocery store (community)**

- Client satisfaction (schedule and budget)
- Work just finished



RBQ: 8333-9432-01



# ***Community of Waskaganish***

## **Construction of a water filtration plant (SEBJ)**

- Client satisfaction (schedule)
- Sub-contracting to other communities (Eastmain)
- Over 95 000 hours by Aboriginals

## **Clearing of Rupert bays (SEBJ)**

- Over 15 000 hours by Aboriginals
- Training in manual felling
- Client satisfaction (schedule)
- Sub-contracting to other communities (Wemindji)
- Collaboration with tallymen

## **Various works with tallymen (SEBJ-HQ)**

- ATV trails
- Snowmobile trails
- Boat ramps
- Trouts spawning grounds

## **Others**

- Access road maintenance (MTQ)
- Camp site construction (SEBJ)
- Control of biting insects (SEBJ)

**Cree trainees (Niskamoon)**

**House (community)**



Water filtration plant - Waskaganish, May 2009





**Now, a little further....**



**If you walk from earth to the moon,  
it takes about 192 000 hours  
or 96 years**



# ***Back to the North Video***



# ***The journey of our traveler***



**20 000 hours is  
equivalent of 10 jobs**



**Until now for Aboriginal  
workers, we created**



**192 000 hours  
is 96 jobs**



**1 600 000 man-hours  
or 800 jobs**





# Images of completed work



Rupert River pile removal



Waskaganish water filtration plant



Rupert River Bailey bridge installation





# Images of completed work



Waskaganish Waterfront spur construction



Waskaganish Waterfront spur construction



# Images of completed work



Rupert River fish study



Rupert River ice monitoring



Rupert River Cree workers



Rupert River larvae drift study



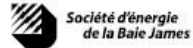
Rupert River water quality





# Images of completed work

## Water Quality Newsletter - 2009



EASTMAIN-1-A AND SARCELLE POWERHOUSES  
AND RUPERT DIVERSION PROJECT

Rupert and Nemiscau Rivers Water Quality Monitoring Program

August 28th, 2009

Issue No.5



Waska Ressources' Water Quality team (from left to right): Paul Erless during 2009 Winter sampling, Julie Breton & Natasha Louttit during 2008 Summer sampling & Rose Wapachee during 2008 Summer Gathering in Old Nemaska.

### Activity report # 5

#### **SPECIAL CAMPAIGN COMPLETED!**

The additional campaign we announced in July is done. Sampling was carried out on July 26<sup>th</sup>. It will enable us to verify the potential effects of the pre-flooding of the Rupert forebay on the water quality of the river.

The usual parameters were measured (see section Water Quality Follow-up at a Glance-Reminder). During this campaign, six (6) out of the twenty-two (22) sites were sampled to monitor the quality of water after the pre-flooding of the forebay. These sites are distributed along the Rupert River:

- Near KP350, "Kamouheowwanouch", in Mesgouez Lake, control site;
- Near KP292, "Kayikkahtawkaw Pastingun", near Lemare River;
- Near KP245, "Meetskoseeyoukom";
- Near KP189, "Nemskau Sakheegun" or Old Nemaska;
- Near KP85, near Mr. Georgekish camp;
- Near KP22, "Nuut-mes-sah-naan", or Gravel Pit.

1



Waskaganish worker's camp



Waskaganish network upgrade





# Images of completed work



Waskaganish larvae drift laboratory



Rupert Diversion internship program



Linemen training program



# Images of completed work



OOPS !!! Wrong image

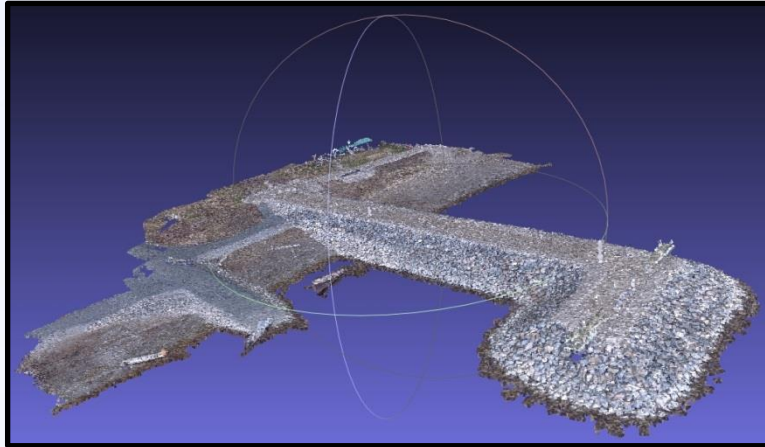


Rupert Diversion manual loggers





# Images of completed work



Drone 3D modeling (volume calculation)



Drone with high precision GPS



☐

**Long term partnership**

☐

**Job creation**

☐

**Training**

☐

**Community' spinoffs**





A sunset scene over a body of water, with a large circular lens flare effect centered on the sun. The sky is a mix of orange, yellow, and dark grey. The water is dark and reflects the light from the sun. The sun is a bright yellow circle in the center of the lens flare.

***Thank you!  
Meegwetch!***

**Give a man a fish, feed him for a day  
Teach him to fish, feed him for lifetime !!!**